



ST. THOMAS' CHURCH KINDERGARTEN

Sham Shui
Po

Address : RM.101-116, BLOCK 24, LOWER SHEK KIP MEI ESTATE,
SHAM SHUI PO, KOWLOON

Tel. : 2779 4201

Fax. : 2784 6613

Joining
2020/21 KG Education Scheme

School No. 323357

Location No. 0001

School Information	
School Category	Non-profit-making
Student Category	Co-educational
Name of School Supervisor	MR HO KAM TIM ARTHUR
Name of School Principal	MS HO WING SZE
School Founding Year	1966
Total No. of Permitted Accommodation of Classrooms in Use (Data as of Sept. 2019)	236
Number of Registered Classrooms	9
Outdoor Playground	No
Indoor Playground	Yes
Music Room	Yes
Other Special Room(s) / Area(s)	Multipurpose room
Total No. of Principal & Teaching Staff (Data as of Sept. 2019) *	17
School Website	http://www.stckg.edu.hk
Quality Review : Result and Report	Meeting the prescribed standards https://www.edb.gov.hk/attachment/en/edu-system/preprimary-kindergarten/quality-assurance-frame-work/qr/qr-report/StThomasCh.pdf

No. & Qualification of Principal & Teaching Staff (Data as of Sept. 2019) *	
Academic Qualification	
Degree holders	15
Non-degree holders	2
Professional Qualification	
C(ECE) or above	17
Qualified KG teachers	0
Other teacher trainings	0
Qualified assistant KG teachers	0
Others	0

* Excluding staff serving aged 0-2

Teacher to Pupil Ratio (Data as of Sept. 2019)	
Teacher to pupil ratio in morning session	1 : 9.4
Teacher to pupil ratio in afternoon session	1 : 5.7
Ratio includes classes aged 2-3	No

No. of Enrolment (Data as of Sept. 2019)				
	Nursery	Lower KG	Upper KG	Total
AM Session	32	42	37	111
PM Session	9	21	18	48
WD Session	17	16	16	49

Annual Fees (2020 / 21 School Year)				
		Nursery	Lower KG	Upper KG
Annual Fees After Deduction of Government Subsidy (No. of Instalment)	AM Session	Free	Free	Free
	PM Session	Free	Free	Free
	WD Session	\$6,390 (10)	\$6,390 (10)	\$6,390 (10)

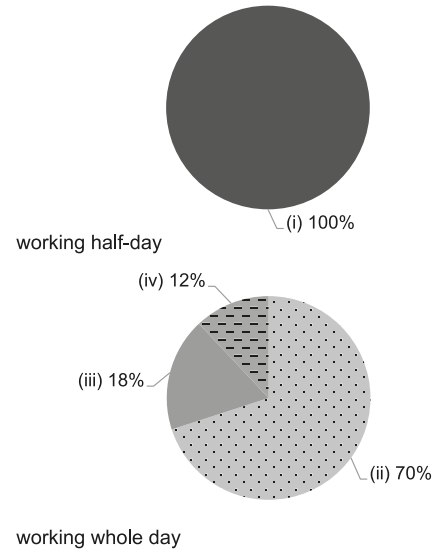
Please refer to the Fees Certificate for details of fees information.

Child Care Services (Data as of Sept. 2019)			
With child care services for children aged 2-3	-	With child care services for children aged under 2	-
Fee level (per annum)	(half - day)	No. of enrolment aged 2-3	0
	(full - day)	Joining Child Care Centre Subsidy Scheme	-
Providing occasional child care services	-	Providing extended hours services	-

Curriculum Details	
Curriculum type : Local	
Curriculum planning	
<p>Our School curriculum is based on the Bible. The Education Bureau's "Kindergarten Education Curriculum Guide" and the Development Appropriate Practice are the foundation of the school curriculum. With an integrated theme-based teaching model, children can, through the living and enjoyable explorative learning activities, acquire knowledge and skill and develop a positive attitude that enhances their multi-intelligence, unleashes their potential, and lays the foundation for future study.</p>	
<p>We will follow the "Kindergarten Education Curriculum Guide" (2017) to plan curriculum. Children of nursery classes will not be asked to write, and there will not be mechanical copying exercises and drills on calculation.</p>	
Learning / Teaching approach & activities	
<p>We attach great importance to establishing an environment conducive to children's learning, strive to create a happy and lively atmosphere, and encourage children to come into contact with things around them for holistic development. Develop children's potential through diverse campus life and lay a good foundation for future learning.</p>	
Assessment of children's learning experiences	
<p>Through continuous observation of children's learning performance, checklists are set according to different learning goals to record children's learning experience and development process.</p>	

Monthly salary range of principal & teaching staff (Data as of Mar. 2020)

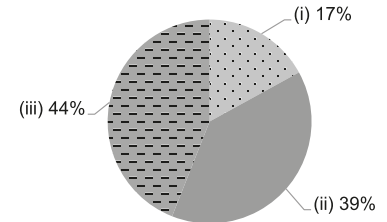
- (i) ≤ \$20,000
- (ii) \$20,001 - \$30,000
- (iii) \$30,001 - \$40,000
- (iv) > \$40,000



School Characteristics	
School vision and mission	
<p>St Thomas Church Kindergarten provides exceptional education for children aged 3-6 years old. Based on the principles of Jesus Christ we strive to build a school that glorifies God and advocates child growth. Our school motto is "Start children off the correct way, once they grow old they will not turn from it" (Proverbs 22:6).</p>	
Support to students	
<p>A social worker will be available for families needing assistance. Teachers also create a counseling network to ensure children are assisted with their individual needs. Adaptation activities are in place for new students as well as bridging courses for the primary curriculum.</p>	
Support to non-Chinese speaking (NCS) students	
<p>Received Grant for Support to NCS Students. appoint additional teaching staff / teaching assistants to support NCS students learning Chinese; arrange interpretation / translation services; engage NCS parent volunteers to enhance communication between school and parents; create an enriched language environment for mastery of the Chinese language; create an inclusive learning environment to facilitate students' integration; collaborate with non-governmental organisations (NGOs) to create an inclusive learning environment; facilitate professional development for teachers to develop effective strategies to help NCS students learn Chinese.</p>	
Support to students with special needs	
<p>Joining the On-site Pre-school Rehabilitation Services.</p>	
Link with parents	
<p>Parent-teacher association : No</p>	
Other activities / communication with parents	
<p>Parents volunteers, parents talk, parents classes, picnic, newsletters, parents' meeting and phone call.</p>	

Working experience of principal & teaching staff in pre-primary education (Data as of Mar. 2020)

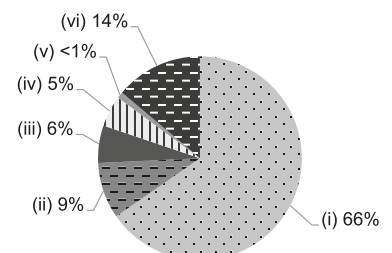
- (i) < 4 years
- (ii) 4 - 7 years
- (iii) > 7 years



2018/19 School Expenditure Information

Expenditure information based on audited account Yes

- (i) salary of principal & teaching staff
- (ii) non-teaching staff salary
- (iii) rent, management fees, rates & government rent
- (iv) teaching resources
- (v) staff training & professional development
- (vi) other expenses



Major Paid Items Reference Price (2019 / 20 School Year)			
Summer uniform	Not directly involved	Winter uniform	Not directly involved
School bag	\$69 / each	Tea and snacks	\$600 / year
Textbooks	\$300-420 / year	Exercise books/ workbooks	\$444-915 / year
Stationery	Not directly involved	Bedding items	Not directly involved