



# YUEN LONG CHURCH (CHURCH OF CHRIST IN CHINA) CHOW SUNG CHU OI NURSERY SCHOOL

Yuen Long

Address : 5 PING SHUN STREET, YUEN LONG, NEW TERRITORIES

Joining  
2020/21 KG Education Scheme

School No. 566250

Location No. 0001

Tel. : 2473 0092

Fax. : 2473 0713

School Information	
School Category	Non-profit-making
Student Category	Co-educational
Name of School Supervisor	MS SUNG WAI YI
Name of School Principal	MS LUI MEE YEE CLARA
School Founding Year	2001
Total No. of Permitted Accommodation of Classrooms in Use (Data as of Sept. 2019)	126
Number of Registered Classrooms	5
Outdoor Playground	Yes
Indoor Playground	Yes
Music Room	Yes
Other Special Room(s) / Area(s)	Group activity room
Total No. of Principal & Teaching Staff (Data as of Sept. 2019) *	17
School Website	<a href="http://www.ylccscons.edu.hk">http://www.ylccscons.edu.hk</a>
Quality Review : Result and Report	Meeting the prescribed standards <a href="https://www.edb.gov.hk/attachment/tc/edu-system/preprimary-kindergarten/quality-assurance-frame-work/qr/qr-report/YLCh_CCC_ChowSungChuOi.pdf">https://www.edb.gov.hk/attachment/tc/edu-system/preprimary-kindergarten/quality-assurance-frame-work/qr/qr-report/YLCh_CCC_ChowSungChuOi.pdf</a>

No. & Qualification of Principal & Teaching Staff (Data as of Sept. 2019) *	
Academic Qualification	
Degree holders	10
Non-degree holders	7
Professional Qualification	
C(ECE) or above	17
Qualified KG teachers	0
Other teacher trainings	0
Qualified assistant KG teachers	0
Others	0

\* Excluding staff serving aged 0-2

Teacher to Pupil Ratio (Data as of Sept. 2019)	
Teacher to pupil ratio in morning session	1 : 8.2
Teacher to pupil ratio in afternoon session	1 : 8.2
Ratio includes classes aged 2-3	Yes

No. of Enrolment (Data as of Sept. 2019)				
	Nursery	Lower KG	Upper KG	Total
AM Session	0	0	0	0
PM Session	0	0	0	0
WD Session	42	42	42	126

Annual Fees (2020 / 21 School Year)				
		Nursery	Lower KG	Upper KG
Annual Fees After Deduction of Government Subsidy (No. of Instalment)	AM Session	-	-	-
	PM Session	-	-	-
	WD Session	\$14,460 (12)	\$14,460 (12)	\$14,460 (12)

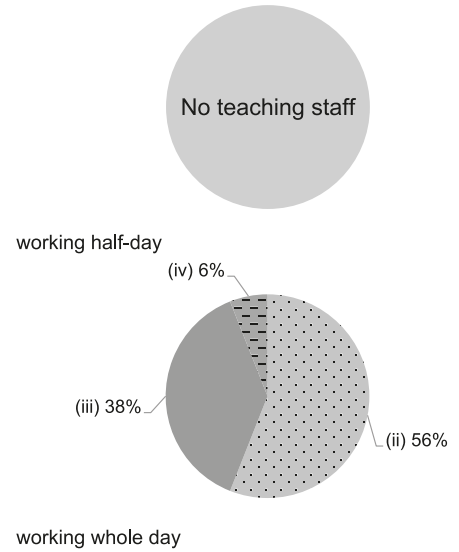
Please refer to the Fees Certificate for details of fees information.

Child Care Services (Data as of Sept. 2019)			
With child care services for children aged 2-3	Yes	With child care services for children aged under 2	No
Fee level (per annum)	(half - day)	No. of enrolment aged 2-3	14
	\$62,808 (full - day)	Joining Child Care Centre Subsidy Scheme	No
Providing occasional child care services	No	Providing extended hours services	No

Curriculum Details	
Curriculum type : Local	
Curriculum planning	
<p>We include voice and sentiment elements in our teaching and seek to improve children's language ability and learning habits through multi-level questions. We adopt an activity-based approach to teaching using themed materials and aids, so that children can learn through play. Children learn by group and hence have more opportunities to participate and get more care and attention. We attach more importance to the development of children's individual ability, and teach according to their aptitude. We provide a variety of special enriching activities that meet the needs of both children' development and the curriculum.</p> <p>We will follow the "Kindergarten Education Curriculum Guide" (2017) to plan curriculum. Children of nursery classes will not be asked to write, and there will not be mechanical copying exercises and drills on calculation.</p>	
Learning / Teaching approach & activities	
<p>We introduce sound-feeling- and theme-based teaching methods as well as a project-based learning approach while organizing group learning activities and visits.</p>	
Assessment of children's learning experiences	
<p>Continuous assessments and children's personal learning portfolios.</p>	

Monthly salary range of principal & teaching staff (Data as of Mar. 2020)

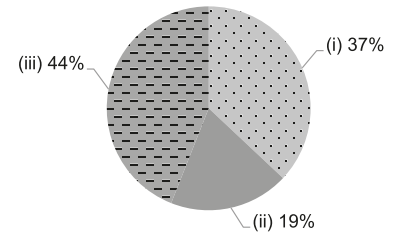
- (i) ≤ \$20,000
- (ii) \$20,001 - \$30,000
- (iii) \$30,001 - \$40,000
- (iv) > \$40,000



School Characteristics	
School vision and mission	
<p>We want our children to grow up healthily in the love of the Lord, and through appropriate activities, know the Lord Christ, study the Lord's instructions, and glorify God and serve human beings. Moreover, through school and missionary services, in the spirit of Christ's love for children, we endeavor to provide high-quality day care services and excellent preschool education for our children within the district so that they attain all-round, balanced development in physical, mental, emotional, language, social, spiritual and moral education.</p>	
Support to students	
<p>Parent-Child Adaption activities for new students, Children' Healthy Emotions Program "Sunshine Children", school social worker services and Mock P.1 activities.</p>	
Support to non-Chinese speaking (NCS) students	
<p>No information</p>	
Support to students with special needs	
<p>No information</p>	
Link with parents	
<p>Parent-teacher association : Yes</p>	
Other activities / communication with parents	
<p>Monthly Life Reports in Children's Handbooks, Parents' Quarterly "Heart Bridge", Parents' Class Visits, Parents Seminars, Parent Sharing Team on the theme that " Principal's Cafe", Parent-Child School Picnic, Parent-Child Sports Day, Parent-Child Design Competitions, Christmas Party, Lunar New Year Booth Game, etc.</p>	

Working experience of principal & teaching staff in pre-primary education (Data as of Mar. 2020)

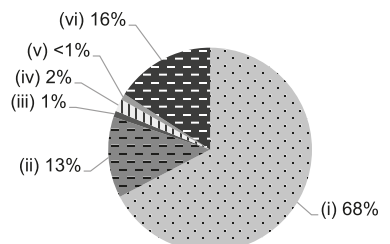
- (i) < 4 years
- (ii) 4 - 7 years
- (iii) > 7 years



2018/19 School Expenditure Information

Expenditure information based on audited account Yes

- (i) salary of principal & teaching staff
- (ii) non-teaching staff salary
- (iii) rent, management fees, rates & government rent
- (iv) teaching resources
- (v) staff training & professional development
- (vi) other expenses



Major Paid Items Reference Price (2019 / 20 School Year)			
Summer uniform	Not directly involved	Winter uniform	Not directly involved
School bag	Not directly involved	Tea and snacks	Not directly involved
Textbooks	Not directly involved	Exercise books/ workbooks	Not directly involved
Stationery	Not directly involved	Bedding items	Not directly involved